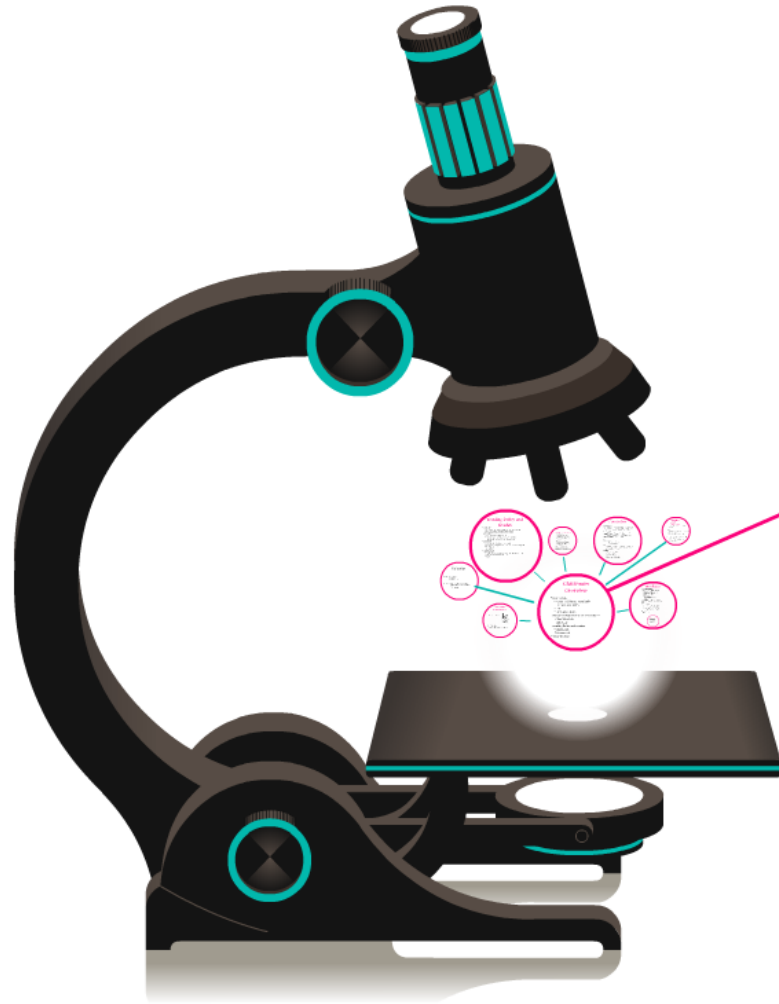


Mrs. Brink's 3rd Grade Back to School Night 2018 Emblem Academy



Introduction

Welcome to 3rd Grade Room 20

Mrs. Brink
661-294-5315 ext 15120
lbrink@saugususd.org
<http://brinkscholars.weebly.com>

About Mrs. Brink

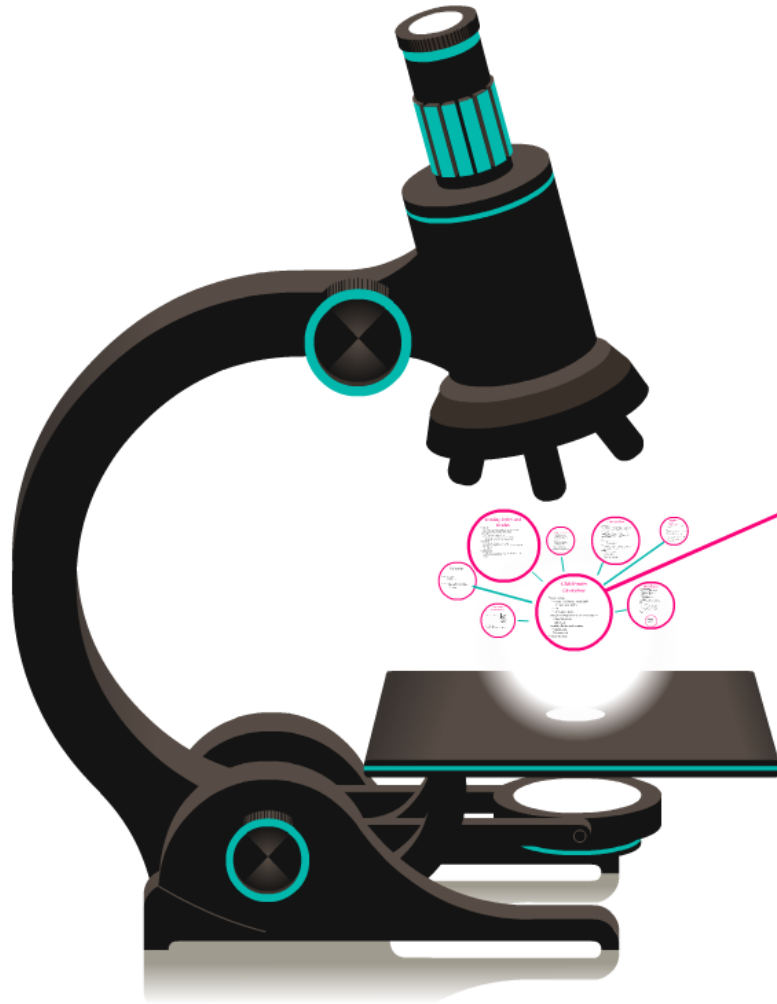
BA - Child Development
- CSULA

MA - Education Admin
- CSUN

Married -
2 girls, Junior in
high school and a
8th grader

Black Lab

Mrs. Brink's 3rd Grade Back to School Night 2018 Emblem Academy



Introduction

Welcome to 3rd Grade Room 20

Mrs. Brink
661-294-5315 ext 15120
lbrink@saugususd.org
<http://brinkscholars.weebly.com>

About Mrs. Brink

BA - Child Development
- CSULA

MA - Education Admin
- CSUN

Married -
2 girls, Junior in
high school and a
8th grader

Black Lab

Emblem Academy

Introduction

Welcome to 3rd Grade Room 20

Mrs. Brink

661-294-5315 ext 15120

lbrink@saugususd.org

<http://brinkscholars.weebly.com>

About Mrs. Brink



*BA- Child Development
- CSULA*

*MA -Education Admin.
- CSUN*

*Married -
2 girls, Junior in
high school and a
8th grader*

Black Lab

About Mrs. Brink



*BA- Child Development
- CSULA*

*MA -Education Admin.
- CSUN*

*Married -
2 girls, Junior in
high school and a
8th grader*

Black Lab

First Day of School Information

- * PTA Hosted Parent Welcome in MPR
 - Join PTA
- * Pick-up
 - 3rd grade - The gate between the K yard and STAR building
 - regular pickup location first day
- * Tuesday Folders - Sign and Return with necessary paperwork
 - Parent survey home Thursday and return Friday

Grading Policy and Grades

- * Classwork
 - *any incomplete classwork will be sent as homework to be completed and returned the next day
- *Absent work
 - * check while you were out folder
 - * check for worksheets in extra copies mailbox
 - * check website- but do not always rely on it
- * Homework
 - *check website- but do not always rely
 - *effort grade on report card - credit/no credit for assignment
 - * Reading log
 - * Dreambox
- * Communication
 - * Tuesday Folder - Classwork returned - review mistakes
 - * Tests - Note home with low score
 - * Email

Link for CCSS Parent Support PDFs

Common Core Math
<https://www.illustrativemathematics.org/HS/index.html>
<https://www.illustrativemathematics.org/MS/index.html>
<https://www.illustrativemathematics.org/ES/index.html>

State Link
<https://www.cde.ca.gov/te/te/te/te.asp>
<https://www.cde.ca.gov/te/te/te/te.asp>
<https://www.cde.ca.gov/te/te/te/te.asp>

Common Core English Link
<https://www.illustrativemathematics.org/HS/index.html>
<https://www.illustrativemathematics.org/MS/index.html>
<https://www.illustrativemathematics.org/ES/index.html>

Curriculum

- Common Core
 *Instructions will be based on California Standards for ELA and Math - Ready Common Core, LA Pilot, Math Direct Instruction
 * Skill, Layered Activities, Assessment, Projects
 Typing Club/Keyboarding without Tears
 * Keyboarding practice for 21st Century Learners
 Cursive - Handwriting without Tears
- IBJ
 * Interactive Notebooks - Core Standards
- PE
 * students must have a note to not participate in PE
 * if they need to miss more than two days of PE, a doctor's note is required
- ESTEM
 *STEMinars - 2 sessions
 *Class Project - Gardens
 *Flight Suit Fridays
 *STEM integrated activities

First Day of School Information

- * PTA Hosted Parent Welcome in MR - Join PTA
- * Pick-up - 8th grade - The gate between the 8 yard and STAK building - regular pickup location first day
- * Tuesday Folders - Sign and return with necessary paperwork - Parent survey home Thursday and return Friday

Behavior

Positive: Wheel of Choice
 Notes Home
 Earned Activities

Consequence: Behavior Reflection/Loss of Privilege
 BMR - Behavior Modification Referral
 Yard BMR
 Contact Home

Classroom Overview

- * Curriculum
 - * CCSS - California Standards for ELA and Math
 - * PE
 - * Art - Mrs. Blake
- * Classroom Expectation and Procedures
 - * Class Schedule
 - * Behavior
- * Grading Policy and Grades
 - * Classwork
 - * Homework
- * Miscellaneous

Classroom Expectations

Class Schedule :
 8:00 AM - 8:15 AM
 8:15 AM - 8:30 AM
 8:30 AM - 8:45 AM
 8:45 AM - 9:00 AM
 9:00 AM - 9:15 AM
 9:15 AM - 9:30 AM
 9:30 AM - 9:45 AM
 9:45 AM - 10:00 AM
 10:00 AM - 10:15 AM
 10:15 AM - 10:30 AM
 10:30 AM - 10:45 AM
 10:45 AM - 11:00 AM
 11:00 AM - 11:15 AM
 11:15 AM - 11:30 AM
 11:30 AM - 11:45 AM
 11:45 AM - 12:00 PM

Class Behavior:
 *Expectations vs Procedures

Miscellaneous

- *Classroom Mailbox
- *Water Bottles - can be brought - be sure to drink during independent time, not during instruction - kept in bump-out room on corner
- * Mechanical Pencils - fine, need to have extra lead, maybe an extra pencil too.
- * Clicking pens
- * Volunteers - Room Rep, Library helper, copier, group rotations
- * Supply list - accordion folders/ binders
- * Questions ???

Support Links

[Support Links](#)



Classroom Overview

- * Curriculum
 - * CCSS - California Standards for ELA and Math
 - * PE
 - * Art - Mrs. Blake
- * Classroom Expectation and Procedures
 - * Class Schedule
 - * Behavior
- * Grading Policy and Grades
 - * Classwork
 - * Homework
- * Miscellaneous

Curriculum

Common Core

*Instruction will be based on California Standards for
ELA and Math - Ready Common Core, LA Pilot, Math
Direct Instruction

* Skill, Layered Activities, Assessment, Projects

Typing Club/Keyboarding without Tears

* Keyboarding practice for 21st Century Learners

Cursive - Handwriting without Tears

INB

* Interactive Notebooks -
Core Standards

PE

* students must have a note to not participate in PE

* if they need to miss more than two days of PE, a
doctor's note is required

ESTEEM

*STEMinars - 2 sessions

*Class Project- Garden

*Flight Suit Fridays

*STEM integrated activities

Classroom Expectations

Class Schedule :

Daily Schedule

| | |
|---------------|---------------------|
| 8:00 | School Begins |
| 8:15 - 8:45 | CORE |
| 8:45 - 10:05 | Math |
| 10:05 - 10:25 | RECESS |
| 10:25 - 12:05 | Language Arts |
| 12:05 - 12:50 | LUNCH |
| 12:50 - 2:49 | Soc./Sci./STEMinars |

Early Release Wednesday 1:39

To Be Determined - Library weekly

- PE 200 min every 2 weeks

Class Behavior:

***Expectations vs Procedures**

Behavior

Positive: Wheel of Choice
Notes Home
Earned Activities

Consequence: Behavior Reflection/Loss of Recess
BMR - Behavior Modification Referral
Yard BMR
Contact Home

Grading Policy and Grades

- * Classwork
 - *any incomplete classwork will be sent as homework to be completed and returned the next day
- *Absent work
 - * check while you were out folder
 - * check for worksheets in extra copies mailbox
 - * check website- but do not always rely on it
- * Homework
 - *check website- but do not always rely
 - *effort grade on report card - credit/no credit for assignment
 - * Reading log
 - * Dreambox
- * Communication
 - * Tuesday Folder - Classwork returned - review mistakes
 - * Tests - Note home with low score
 - * Email

Behavior

oice

ities

Reflection/ Loss of Passes

Link

Co
htt
co

Miscellaneous

- *Classroom Mailbox
- *Water Bottles - can be brought
 - be sure to drink during independent time, not during instruction
 - Kept in bump-out room on counter
- * Mechanical Pencils - fine, need to have extra lead, maybe an extra pencil too.
- * Clicking pens
- * Volunteers - Room Rep, Library helper, copier, group rotations
- * Supply list - accordion folders/ Binders
- * Questions ???

Important Links

Websites
- <http://brinkscholars.weebly.com>
- <https://clever.com>
*students log in and have access to curriculum support
- Supply List - on the Emblem Website
- Classroom Supply List - https://www.amazon.com/gp/registry/wishlist/2FVBL9GF3FY?ref=cm_wl_list_o_0?
- various items as activities come about

Important Links

Websites

~ <http://brinkscholars.weebly.com>

~ <https://clever.com>

^students log in and have access to
curriculum support

~ Supply List - on the Emblem Website

~ Classroom Supply List - <https://>

www.amazon.com/gp/registry/

[wishlist/2JFVBL9GF3HYY/ref=cm_wl_list_o_0?](https://www.amazon.com/gp/registry/wishlist/2JFVBL9GF3HYY/ref=cm_wl_list_o_0?)

~ various items as activities come about

Link for CCSS Parent Support PDFs

Language Arts Link

[http://www.cgcs.org/site/default.aspx?
PageType=3&ModuleInstanceID=383&ViewID=7b97f7ed-8e5e-4120-848f-
a8b4987d588f&RenderLoc=0&FlexDataID
=634&PageID=328](http://www.cgcs.org/site/default.aspx?PageType=3&ModuleInstanceID=383&ViewID=7b97f7ed-8e5e-4120-848f-a8b4987d588f&RenderLoc=0&FlexDataID=634&PageID=328)

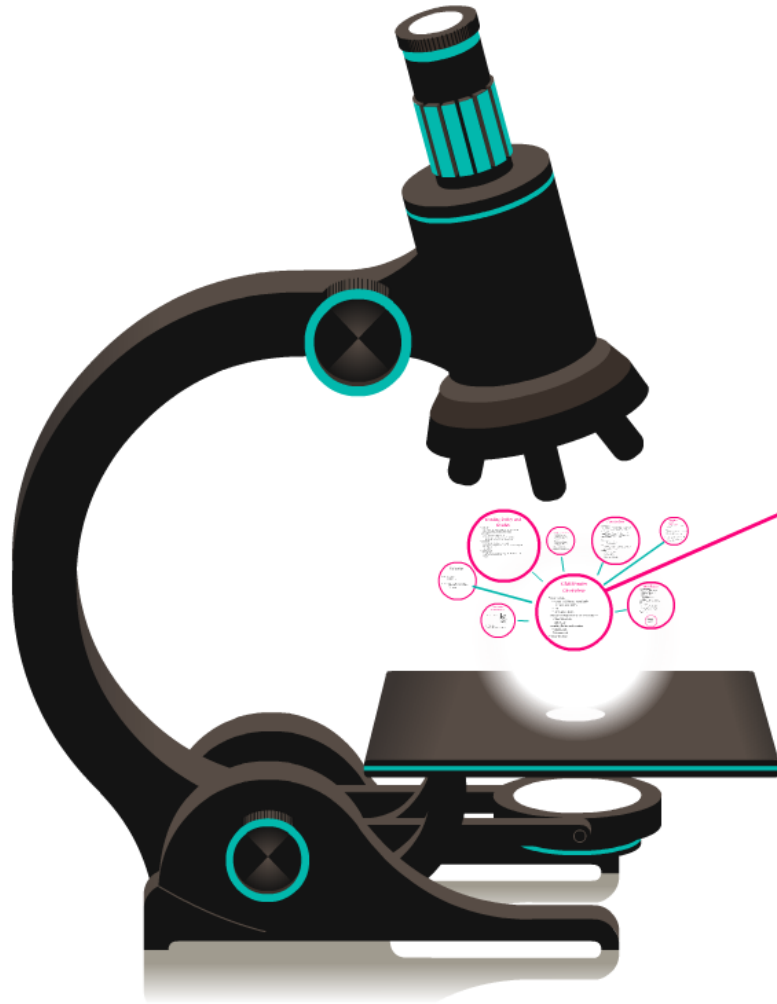
Math Link

[http://www.cgcs.org/site/default.aspx?
PageType=3&ModuleInstanceID=292&ViewID=7b97f7ed-8e5e-4120-848f-
a8b4987d588f&RenderLoc=0&FlexDataID
=522&PageID=244](http://www.cgcs.org/site/default.aspx?PageType=3&ModuleInstanceID=292&ViewID=7b97f7ed-8e5e-4120-848f-a8b4987d588f&RenderLoc=0&FlexDataID=522&PageID=244)

Common Core Overview Links

[http://www.smmusd.org/edservices/
commoncore/pdf/CCSParentHandbook.pdf](http://www.smmusd.org/edservices/commoncore/pdf/CCSParentHandbook.pdf)

Mrs. Brink's 3rd Grade Back to School Night 2018 Emblem Academy



Introduction

Welcome to 3rd Grade Room 20

Mrs. Brink
661-294-5315 ext 15120
lbrink@saugususd.org
<http://brinkscholars.weebly.com>

About Mrs. Brink

BA - Child Development
- CSULA

MA - Education Admin
- CSUN

Married -
2 girls, Junior in
high school and a
8th grader

Black Lab